

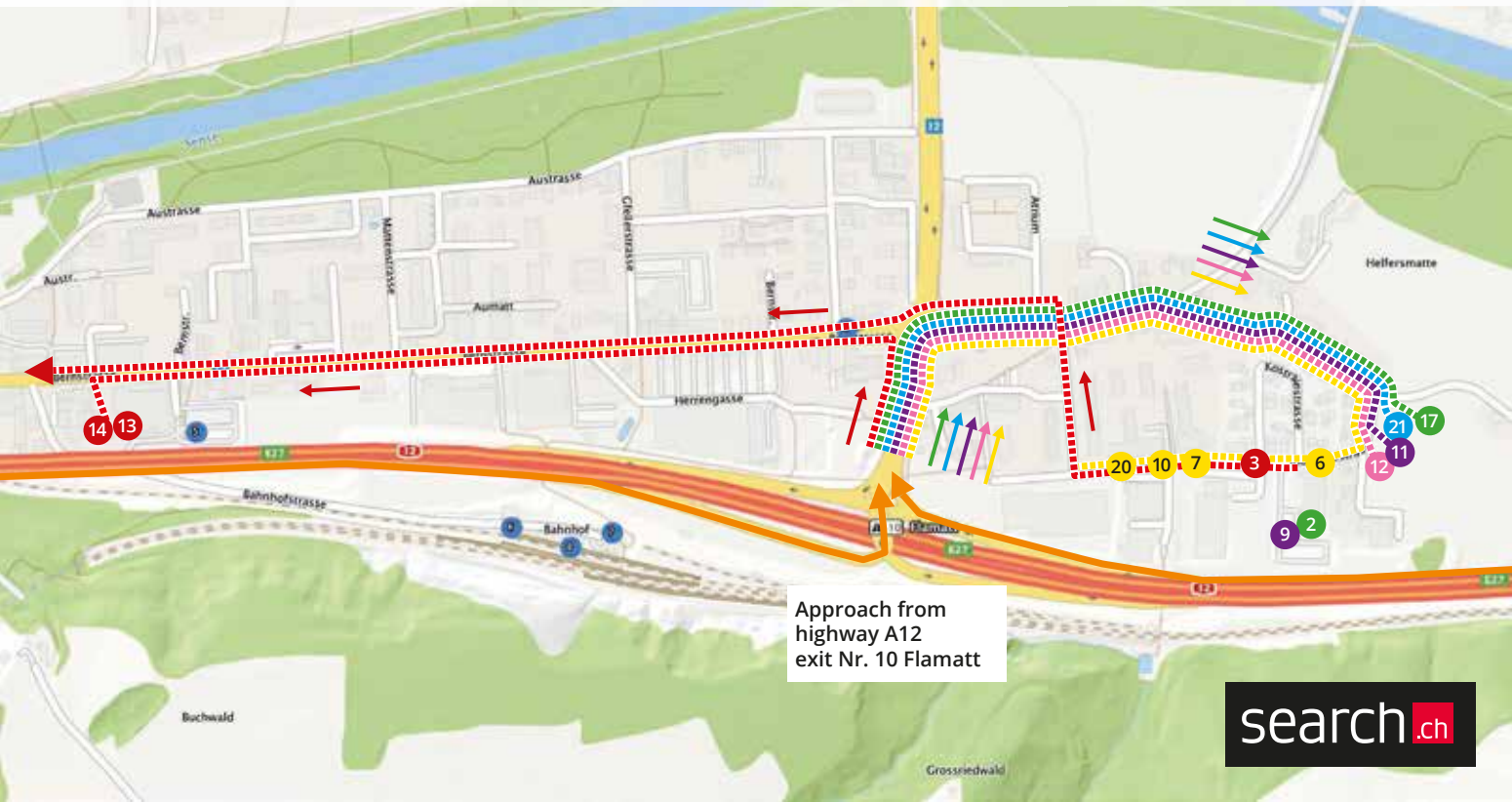
Flamatt

Explanation Start



Approach from all directions highway A12 exit Nr. 10 Flamatt
46°53'21.6"N 7°19'25.2"E
46.889336, 7.323674

- 2 Permanence
- 3 Start
- 6 Officials
- 7 Direction / UCI
- 9 VIP zone
- 10 VIP Drivers
- 11 P VIP Guests
- 12 Publicity
- 13 Sports Director
- 14 Teams
- 17 P Media
- 20 Police
- 21 Sponsors



Approach from highway A12 exit Nr. 10 Flamatt

